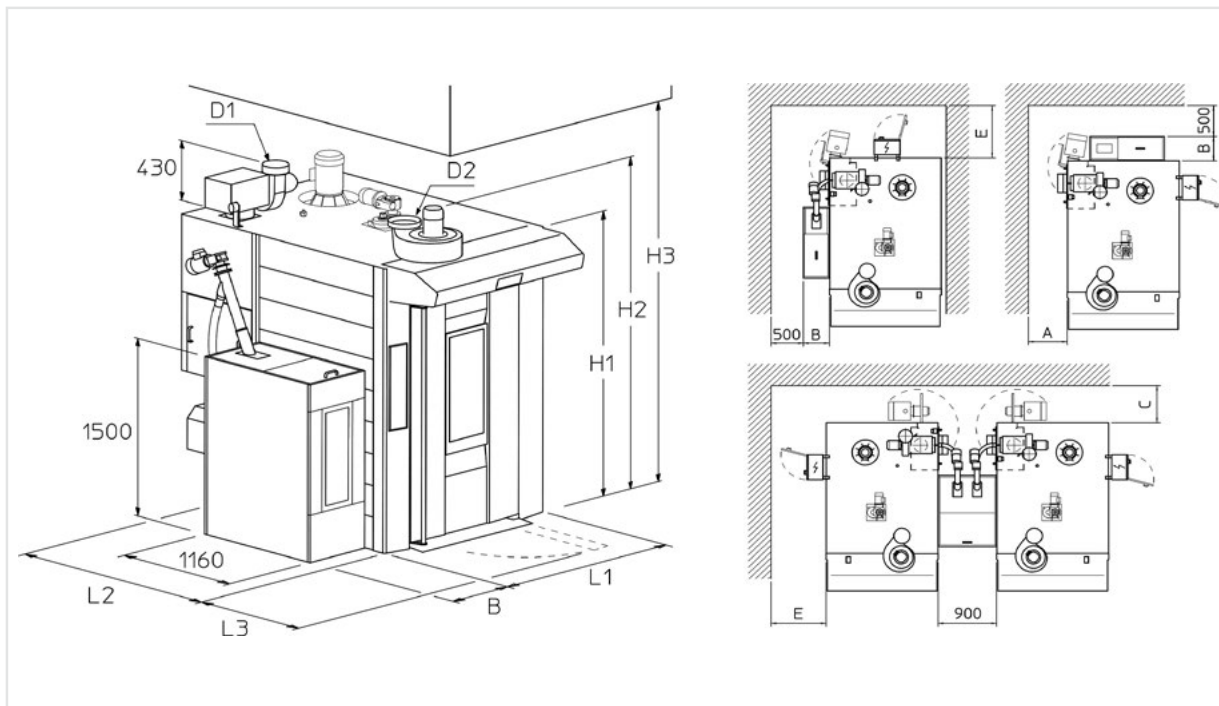


# ROTOPELLET AVANT HR



- Horizontal flame pellet burner with feeding screw and control system (excluded pellet tank)
- Modular steam generator, with cascade elements with spheres (great steam production)
- Steamers with automatic feed
- Hood with improved exhaust fan and fat box
- Door with double glass and double closing
- USB connection
- Automatic steam exhaust system (Fast Air 3 positions)
- Manual emergency steam exhaust valve
- Rapid cooling valve
- Automatic start
- Standard rotation device with hook
- Electric board with extended cables to hang it on oven's sides.
- Aided draught kit flue gas circuit
- Oven with burner on the right is available (optional)
- Preset for automatic lifting group by lever (optional)
- Available on versions FLEX ENERGY 0.8H and HI CONTROL 0.20H depending on working hours
- Steel brush for exchanger tube cleaning
- Standard st/st exterior panel
- Flue gas circuit draft control pressure switch kit

|               |             |
|---------------|-------------|
| POWER INLET   | 400V/3N~/50 |
| FUME EXHAUST  | Ø 200       |
| STEAM EXHAUST | Ø 250       |



| Tipo forno<br>Oven | L1<br>mm | L2<br>mm | L3<br>mm | H1<br>mm | H2<br>mm | H3<br>mm | Scarico fumi<br>Fume exhaust<br>D1 Ø mm | Scarico vapori<br>Steam exhaust<br>D2 Ø mm | A<br>mm | B mm             |            | C<br>mm | E<br>mm |
|--------------------|----------|----------|----------|----------|----------|----------|---|--|---------|------------------|------------|---------|---------|
|                    |          |          |          |          |          |          |   |  |         | Mod.<br>standard | Mod.<br>HC |         |         |
| 6080               | 1450     | 1980     | 910      | 2300     | 2670     | 2840     | 200                                     | 250 (**)                                   | 600     | 400              | 600        | 450     | 850     |

(\*\*) DIAMETRO MIN. TUBAZIONE = 200MM / MINIMUM DIAMETER PIPE = 200MM

|                          | Pan capacity |       | Pan size  | Minimum door width | Weight | Voltage | SC version |
|--------------------------|--------------|-------|-----------|--------------------|--------|---------|------------|
|                          | n°           | passo | mm        | mm                 | kg     | kW      | kcal/h     |
| <b>ROTO PELLETT 6080</b> | 16           | 105   | 600x800   | 500                | 1450   | 3,5     | 60.000     |
|                          | 18           | 93    | 2x600x400 |                    |        |         |            |